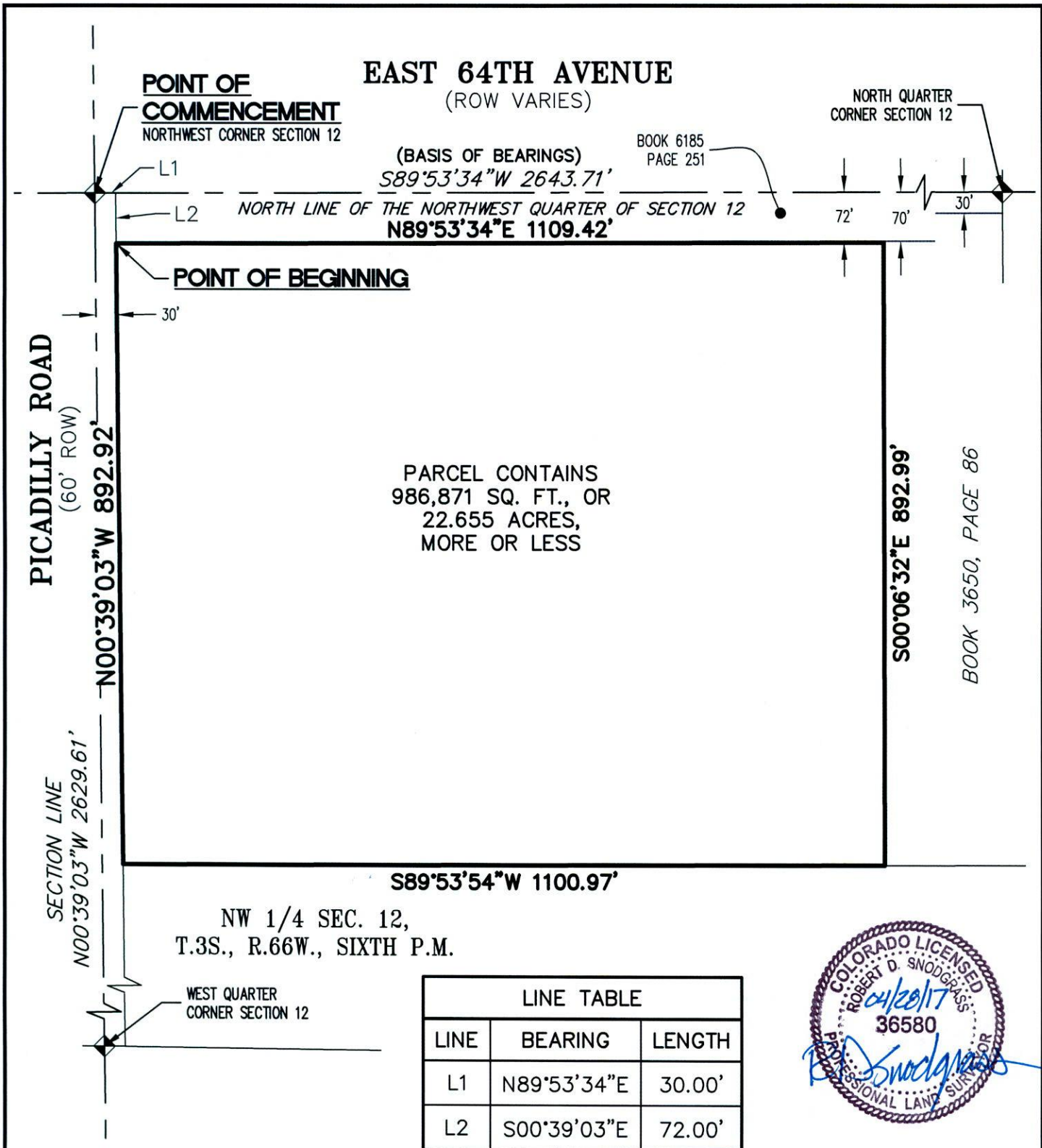


# ILLUSTRATION TO ACCOMPANY LEGAL DESCRIPTION



NW 1/4 SEC. 12,  
T.3S., R.66W., SIXTH P.M.



NOTE: THIS DRAWING DOES NOT REPRESENT A MONUMENTED LAND SURVEY AND IS ONLY INTENDED TO DEPICT THE ATTACHED LEGAL DESCRIPTION.

PATH: Q:\120517-01-Hilltop Farm\Draw\EXHIBITS  
 DWG NAME: PARCEL A.DWG  
 DWG: JAE CHK: R.D.S.  
 DATE: 04-27-2017  
 SCALE: 1" = 200'



**HILLTOP AT DIA DISTRICT NO. 1**  
 NW1/4 SEC. 12, T3S, R66W, 6TH P.M.  
 ADAMS COUNTY, COLORADO  
 JOB NUMBER 120517-01 2 OF 2 SHEETS

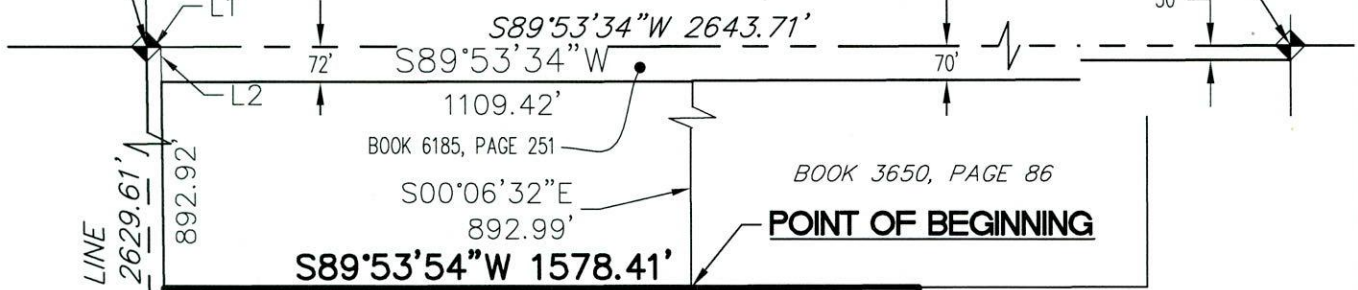
**POINT OF COMMENCEMENT** **EAST 64TH AVENUE**  
(ROW VARIES)

NORTHWEST CORNER SECTION 12 FOUND

(BASIS OF BEARINGS)

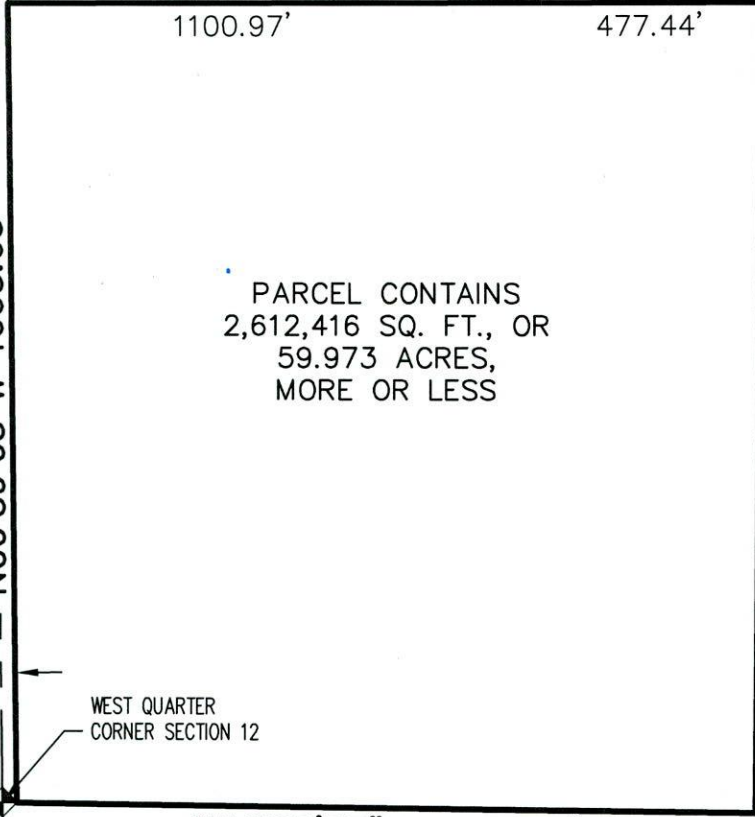
NORTH QUARTER CORNER SECTION 12,

NORTH LINE OF THE NORTHWEST QUARTER OF SECTION 12



**PICADILLY ROAD**  
(60' ROW)

SECTION LINE  
N00°39'03"W 2629.61'  
892.92'  
N00°39'03"W 1665.05'



PARCEL CONTAINS  
2,612,416 SQ. FT., OR  
59.973 ACRES,  
MORE OR LESS

NW 1/4 SEC. 12,  
T.3S., R.66W.,  
SIXTH P.M.

HELD SOUTH MONUMENT AT  
CENTER QUARTER CORNER  
SECTION 12

WEST QUARTER CORNER SECTION 12

N89°25'35"W 1542.72'

1057.36'



LINE TABLE		
LINE	BEARING	LENGTH
L1	N89°53'34"E	30.00'
L2	S00°39'03"E	72.00'

NOTE: THIS DRAWING DOES NOT REPRESENT A MONUMENTED LAND SURVEY AND IS ONLY INTENDED TO DEPICT THE ATTACHED LEGAL DESCRIPTION.

PATH: Q:\120517-01-Hilltop Farm\DWG\EXHIBITS  
DWG NAME: PARCEL B.DWG  
DWG: JAE CHK: R.D.S.  
DATE: 04-27-2017  
SCALE: 1" = 400'



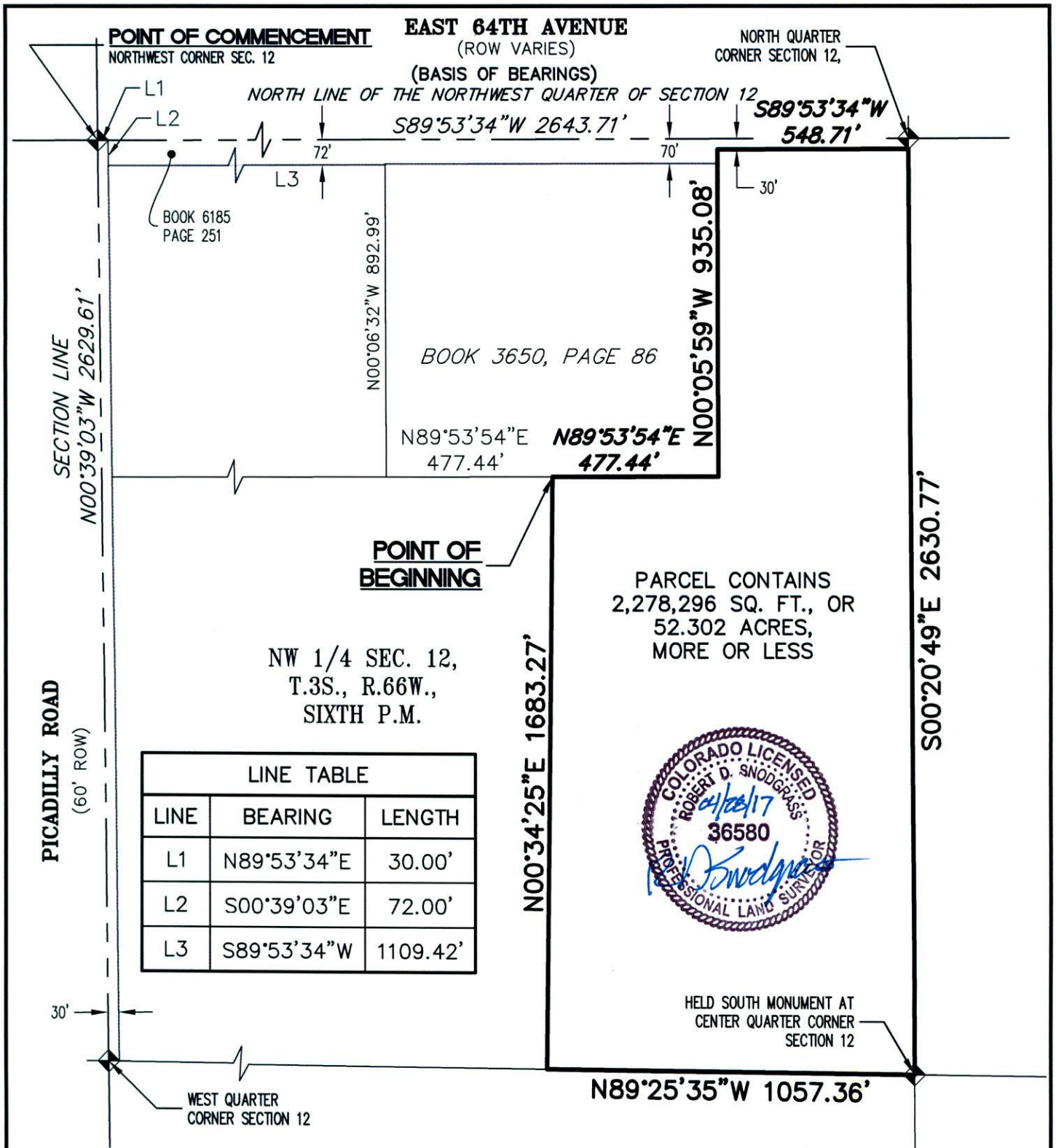
300 East Mineral Ave,  
Suite 1  
Littleton, Colorado 80122  
Phone: (303)713-1898  
Fax: (303)713-1897  
www.aztecconsultants.com

**HILLTOP AT DIA DISTRICT NO. 2**  
NW1/4 SEC. 12, T3S, R66W, 6TH P.M.  
ADAMS COUNTY, COLORADO

JOB NUMBER 120517-01

2 OF 2 SHEETS

# ILLUSTRATION TO ACCOMPANY LEGAL DESCRIPTION



NOTE: THIS DRAWING DOES NOT REPRESENT A MONUMENTED LAND SURVEY AND IS ONLY INTENDED TO DEPICT THE ATTACHED LEGAL DESCRIPTION.

PATH: Q:\120517-01-Hilltop Farm\Draw\EXHIBITS  
 DWG NAME: PARCEL C.DWG  
 DWG: JAE CHK: R.D.S.  
 DATE: 04-27-2017  
 SCALE: 1" = 400'



300 East Mineral Ave,  
 Suite 1  
 Littleton, Colorado 80122  
 Phone: (303)713-1898  
 Fax: (303)713-1897  
 www.aztecconsultants.com

**HILLTOP AT DIA DISTRICT NO. 3**  
 NW1/4 SEC. 12, T3S, R66W, 6TH P.M.  
 ADAMS COUNTY, COLORADO

JOB NUMBER 120517-01

2 OF 2 SHEETS